



Introduction to our

Company Profile



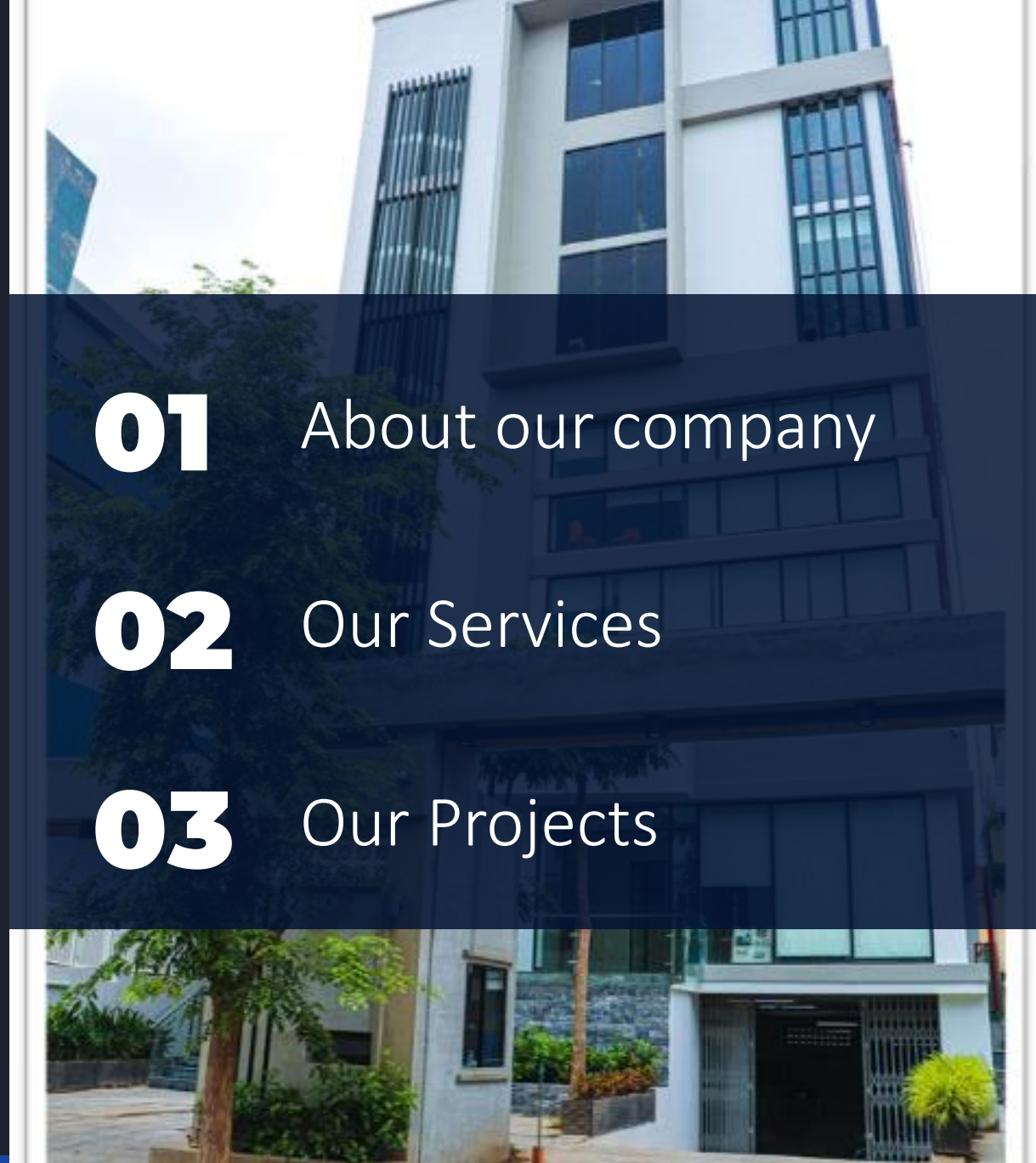


Table of Contents

01 About our company

02 Our Services

03 Our Projects





Section 01

About Our Company

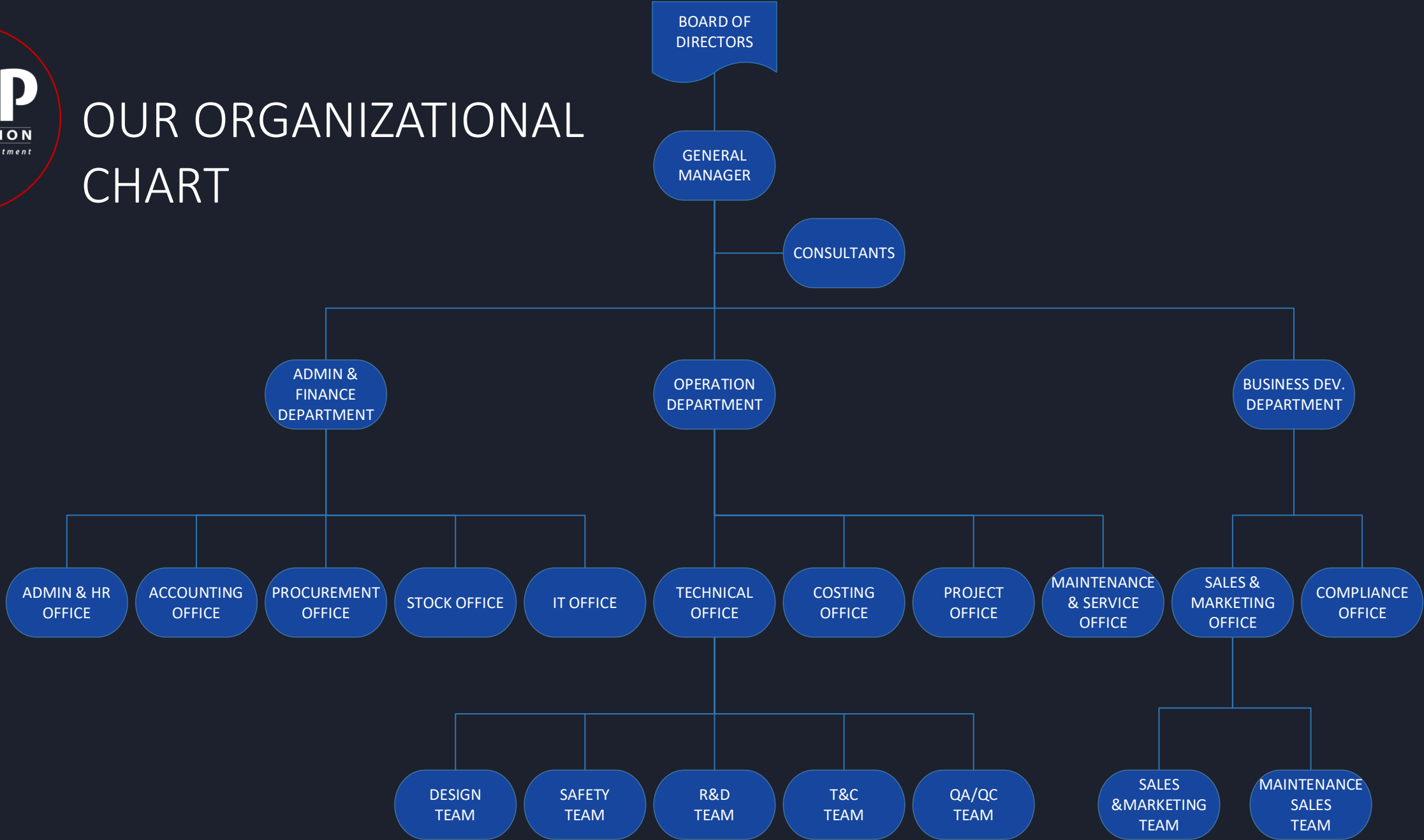


CE&P CORPORATION Ltd, it's a multifaceted Engineering & Construction company has been in the field for almost 10 years and have diversified into a total turnkey MEP engineering solution providing in design, construction, and maintenance services.

The company has experienced with a wide diverse range of sectors which includes: Infrastructure, Industrial Plants & Factories, Banks, Office Building, Commercial Buildings, Hotels, and Resorts & Recreation.



OUR ORGANIZATIONAL CHART





Our Team of Experts



WE are strongly believed that to provide the best services and sustainable growth of the company , we need to invest in our human resources by training and direct support .

We also promote passion team spirit , and integrity within our workforce . Our engineers are graduated from most reputation university .

We regularly organize internal workshops and on-the-job training programs to provide our staff with essential skills as well as to property implement the management system .

CE&P staff is continuously developing in terms of number as well as quality . Up to the beginning of 2023 , CE&P has 1000 permanent staff.



Our Team In Action



PLANNING, ANALYSIS, COORDINATION



Our Team In Action



SAFETY AND INSPECTION



Our Team In Action



INSTALLATION



REGULAR MANAGEMENT MEETING



Section 02

OUR SERVICES

CE&P CORPORATION Ltd, is a one-stop shop that offer a complete set of works for MEP System. From design, consultancy, supply materials, Installation and maintenance service.

We Guarantee that, We can deliver a Great Quality , Best Workmanship and cost effective solutions .





MECHANICAL

- Water-cooled chillers
- Cooling towers
- Air-handling units, fan coil units and split systems
- Variable Refrigerant Volume (VRV) systems
- Fresh air, ventilation and exhaust systems (including ductworks system)
- Cold rooms
- Clean rooms
- Building Management System(BMS) implementation





ELECTRICAL

- MV/LV system
- MV/LV substation and transformers
- Power plant installation (generators) and power distribution (electrical main switchboard, panels)
- LV distribution (bus duct, cable support and distribution and cabling works)
- UPS installation
- Communication & Security Systems
- Security/Access Control
- Fire Alarm systems
- Closed-Circuit Television (CCTV)
- Master Antenna Television (MATV)
- Telephone & data (cabling, PABX)
- Public Address (PA and EWIS)





PLUMBING & FIRE PROTECTION

- Water treatment plant installation and piping works
- Cold & hot water production and distribution
- Storm water drainage and pumping systems
- Soil and waste water treatment
- Equipment installation and water treatment for swimming pools
- Firefighting systems
- LPG systems





Section 03

OUR PROJECTS

For almost 10 Years in the industry, CE&P has completed over 150 Projects nationwide, From Average to High-End Projects.

Some of our accomplished projects are from the building types of hotels, condos, brewery ,commercials, ministry ,luxury villas, factories and many more .



03



HOTEL'S & RESORT



EMION HOTEL



KVL HOTEL



HOTEL'S & RESORT



HYATT HOTEL



SUN & MOON HOTEL



HOTEL'S & RESORT



TREELINE HOTEL



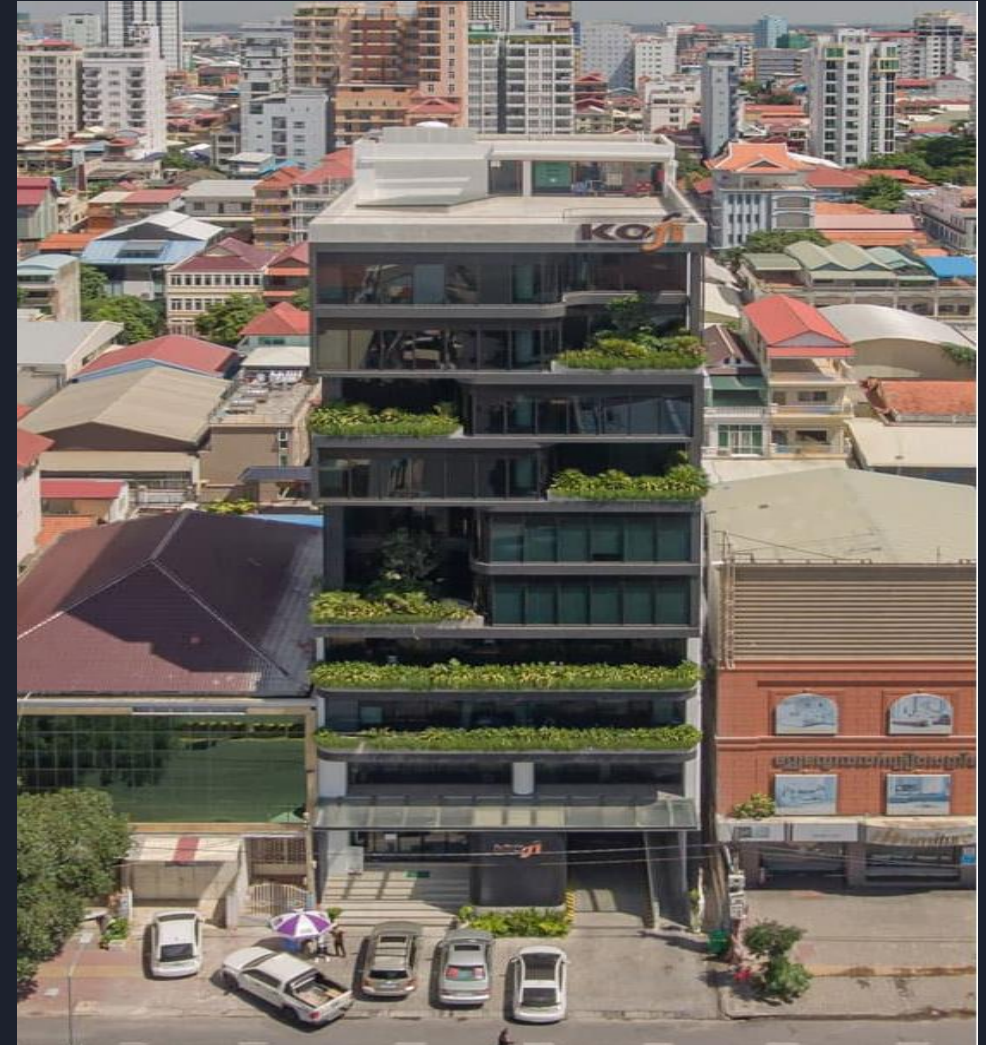
ALLILAH RUSSEY KEO RESORT



OFFICES, APARTMENT'S & CONDO'S



ISI TOWER



KOFI BUILDING



OFFICES, APARTMENT'S & CONDO'S



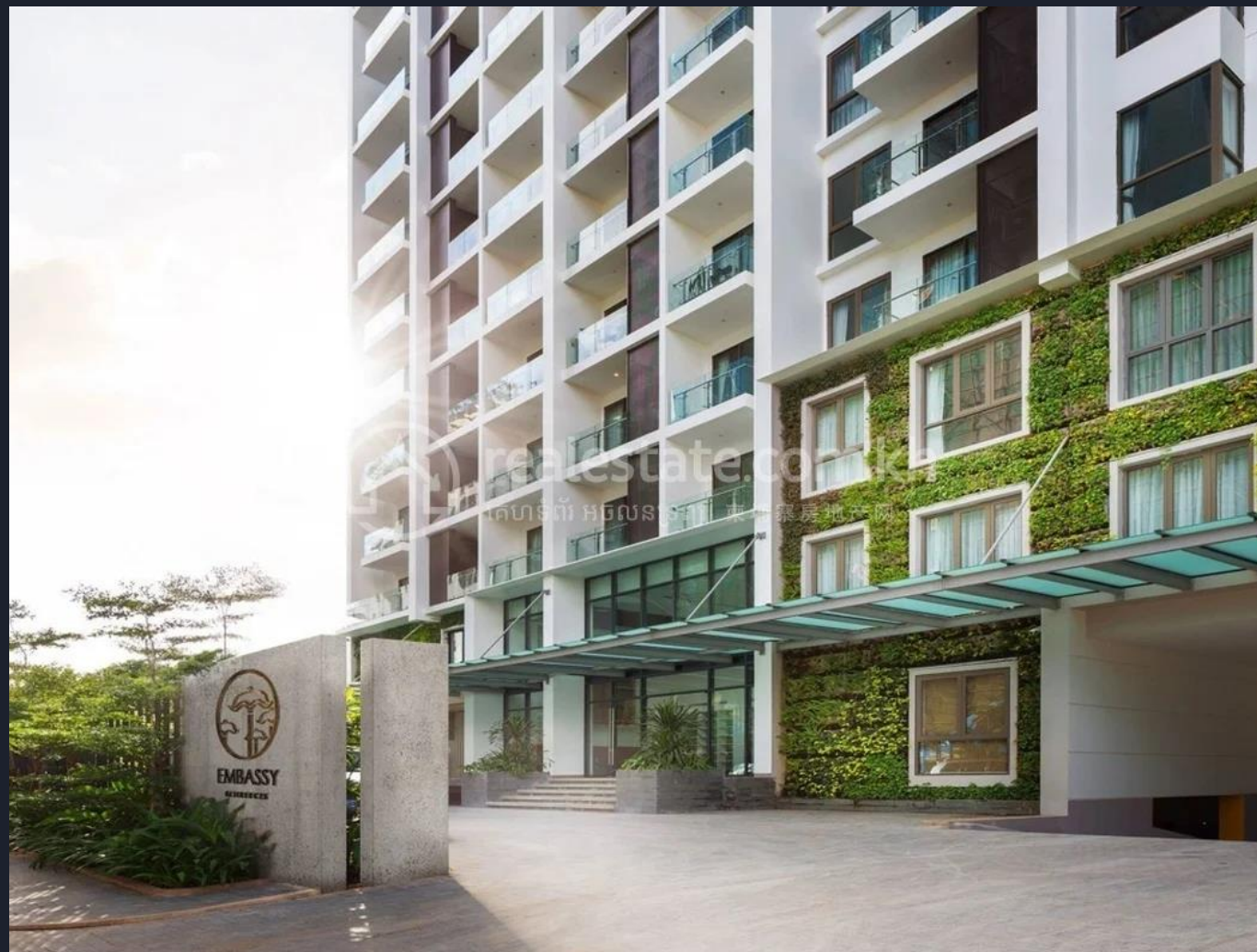
EMBASSY CENTRAL



EXCHANGE SQUARE



OFFICES, APARTMENT'S & CONDO'S



EMBASSY RESIDENCE

BANK'S , FACTORIES & WAREHOUSE



HATTHA BANK



VATTANAC BREWERY



BANK'S , FACTORIES & WAREHOUSE



KHMER BREWERY EXTENSION



K- CEMENT FACTORY



BANK'S , FACTORIES & WAREHOUSE



ISI FACTORY



ZUELLIG PHARMA

COMMERCIAL BUILDINGS



K- MALL



CHIPMONG BAKTOUK



COMMERCIAL BUILDINGS



VATTANAC PARKING LIFESTYLE



KMH SHOP HOUSES

COMMERCIAL BUILDINGS



MEGAMALL 271



AEON MALL EXTENSION



LIST OF CE&P MAJOR PROJECTS

| AIRPORTS | COMMERCIAL | FIT-OUT | OFFICE |
|--|---|--|------------------------------|
| BRANCH OF VINCI CON.GRANDS PROJECT SAS | AEON MALL SEN SOK | BRITISH EMBASSY-VIENTIANE | TIGER BAY CO.,LTD |
| SIEM REAP INTERNATIONAL AIRPORT | KIDDIES EDGES CO., LTD | KID PLAYGROUND SEN SOK | EXCHANGE SQUARE PHNOM PENH |
| CANA SINO CONSTRUCTION CORPORATION | ANGLICAN CHURCH OF CHRIST OUR PEACE | ARABICA TK | CPB PHSAR LEU SERVICE BRANCH |
| BANKS | AIGENER SHOP | F&B SEN SOK MALL | PAUL & SHARK STONE |
| CPB SIEM REAP | CHIP MONG BAK TOUK | VERSACE @UNIT G3 | KOFI OFFICE |
| HATTA BANK TOWER | CHIP MONG SENSOK | LITTLE SHEEP HKL | ONE KMH SITE OFFICE |
| GDT TOWER | KHM SHOP HOUSE | LITTLE SHEEP FUN MALL | ISSARA SYNERGY CO.,LTD |
| ABA TOWER | CHIP MONG 271 MEGA MALL | SUSHI RESTAURANT, BREWPUB & KOREAN BBQ | GEOLINK OFFICE |
| CONDOS | K MALL | CLINIC OLYMPIA | HGB OFFICE |
| EMBASSY RESIDENCES | ONE KMH | DOOZII PLAY GROUND MEGAMALL 271 | ISI OFFICE |
| URBANLAND CENTRAL BKK | SAHAKA | RENOVATION & EXTENSION OF MOH LAB | FUXIN OFFICE |
| HOTEL & RESORT | VATTANAC LIFESTYLE PARK | WAREHOUSE & FACTORIES | VATTANAC VILLE OFFICE |
| GRAND PP GOLF CO., LIMITED | CHIPMONG INDUSTRIES (CMI) | KAMPOT CEMENT | TK OFFICE |
| KOH RUSSEY HOTEL | ARABICA SHOP | NAWAPLASTIC (CAMBODIA) | KCV OFFICE BUILDING |
| START PHNOM PENH HOTEL | AEON MALL 1 | GEOLINK GROUP CO., LTD | TPMG OFFICE |
| TREE LINE HOTEL | CHIP MONG 271 MEGAMALL | ISI Steel Co., Ltd | SCHOOLS |
| HYATT REGENCY PHNOM PENH | BODY AND PAINT WAREHOUSE KIA BRANCH PONCHENTONG PHNOM PENH | VATTANAC BREWERY | ISPP |
| KVL HOTEL | VATTANAC TOWER | ZP WAREHOUSE PROJECT | AISPP THEATHER |
| SUN & MOON REVERSIDE | NEO GAME PHASE 2 CHIP MONG 271 MEGA MALL | CROWN KHMER EXTENSION | AII CHBAR AMPOV CAMPUS |
| VILLA | CHIP MONG MEGA MALL | SEA-DOO CAM-AM SHOWROOM | |
| THREE-STOREY RESIDENTIAL BUILDING | AEON HALL | ADMIN BLOCK BUILDING | |
| | | KHMER BEVERAGES EXTENSION-PHASE 4 | |



Thanks for Your Time!