



Introduction to our

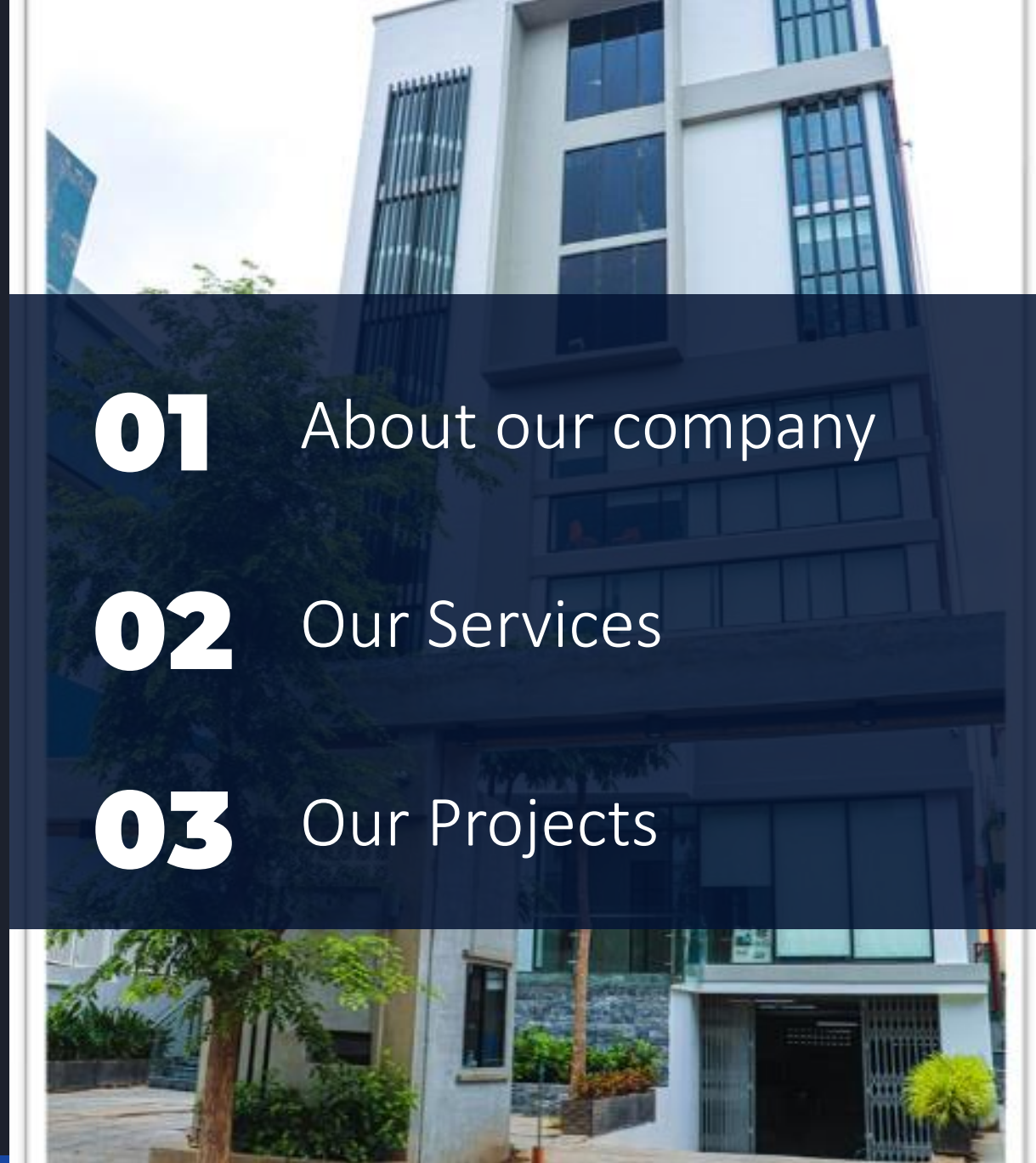
Company Profile





Table of Contents

- 01** About our company
- 02** Our Services
- 03** Our Projects





Section 01

About Our Company



CE&P CORPORATION Ltd, it's a multifaceted Engineering & Construction company has been in the field for almost 10 years and have diversified into a total turnkey MEP engineering solution providing in design, construction, and maintenance services.

The company has experienced with a wide diverse range of sectors which includes: Infrastructure, Industrial Plants & Factories, Banks, Office Building, Commercial Buildings, Hotels, and Resorts & Recreation.



MISSION

To use value engineering, effective working method and obsessed working team with enthusiastic working environment. To implement strictly ISO 9001-2015 and ISO 45001.

VISION

To be the preferred contractor of choice with durable competitive advantage. To be a company that good employees are proud to work with.





CERTIFIED ISO 9001:2015

OUR CERTIFICATION

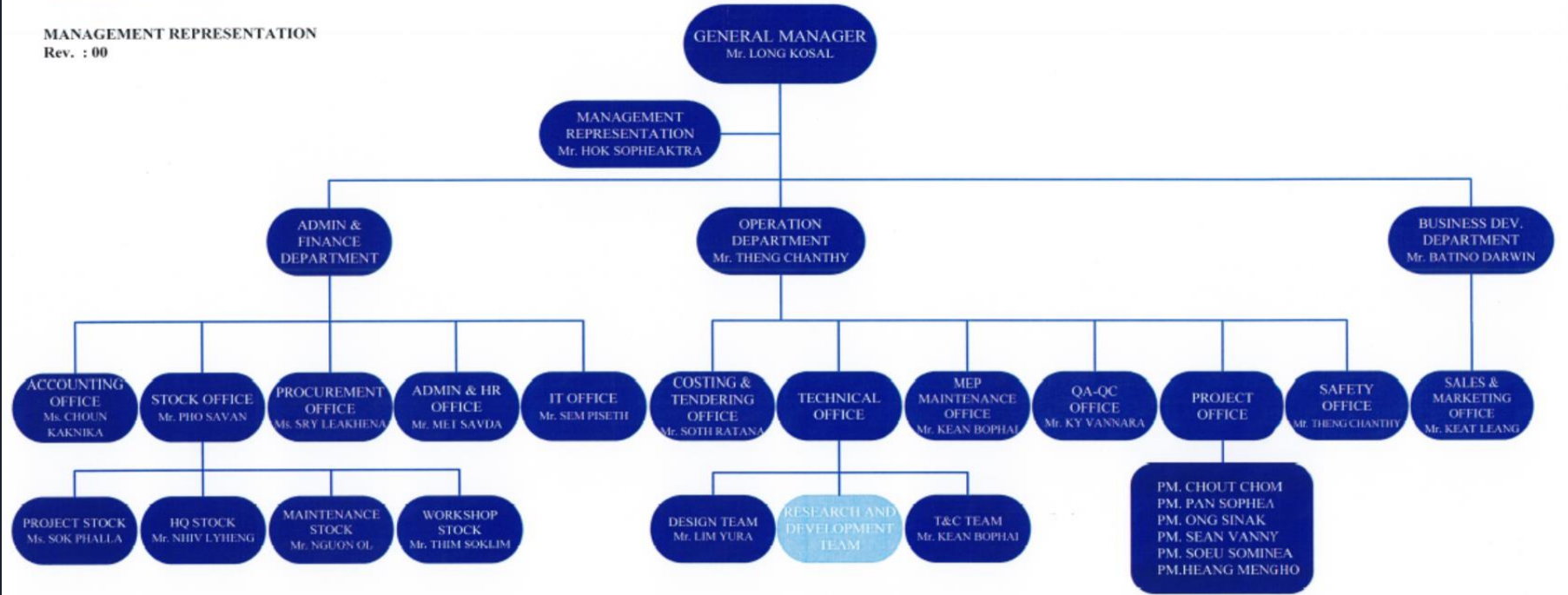




OUR ORGANIZATIONAL CHART



MANAGEMENT REPRESENTATION
Rev. : 00



Prepared by: Mr. HOK SOPHEAKTRA
Signature

Issue date: 21-August-2023

Checked by: Mr. THENG CHANTHY
Signature

Issue date: 21-August-2023

Approved by: Mr. LONG KOSAL
Signature

Issue date: 21-August-2023



Our Team of Experts



WE are strongly believed that to provide the best services and sustainable growth of the company , we need to invest in our human resources by training and direct support .

We also promote passion team spirit , and integrity within our workforce . Our engineers are graduated from most reputation university .

We regularly organize internal workshops and on-the-job training programs to provide our staff with essential skills as well as to property implement the management system .

CE&P staff is continuously developing in terms of number as well as quality . Up to the beginning of 2024 , CE&P has over 1000 permanent staff.



Our Team In Action



PLANNING, ANALYSIS, COORDINATION



Our Team In Action



SAFETY AND INSPECTION



Our Team In Action



INSTALLATION



REGULAR MANAGEMENT MEETING



Section 02

OUR SERVICES

CE&P CORPORATION Ltd, is a one-stop shop that offer a complete set of works for MEP System. From design, consultancy, supply materials, Installation and maintenance service.

We Guarantee that, We can deliver a Great Quality , Best Workmanship and cost effective solutions .



02

MECHANICAL

- Water-cooled chillers
- Cooling towers
- Air-handling units, fan coil units and split systems
- Variable Refrigerant Volume (VRV) systems
- Fresh air, ventilation and exhaust systems (including ductworks system)
- Cold rooms
- Clean rooms
- Building Management System(BMS) implementation



ELECTRICAL

- MV/LV system
- MV/LV substation and transformers
- Power plant installation (generators) and power distribution (electrical main switchboard, panels)
- LV distribution (bus duct, cable support and distribution and cabling works)
- UPS installation
- Communication & Security Systems
- Security/Access Control
- Fire Alarm systems
- Closed-Circuit Television (CCTV)
- Master Antenna Television (MATV)
- Telephone & data (cabling, PABX)
- Public Address (PA and EWIS)



PLUMBING & FIRE PROTECTION

- Water treatment plant installation and piping works
- Cold & hot water production and distribution
- Storm water drainage and pumping systems
- Soil and waste water treatment
- Equipment installation and water treatment for swimming pools
- Firefighting systems
- LPG systems





Section 03

OUR PROJECTS

For almost 10 Years in the industry, CE&P has completed over 150 Projects nationwide, From Average to High-End Projects.

Some of our accomplished projects are from the building types of hotels, condos, brewery ,commercials, ministry ,luxury villas, factories and many more .



03



HOTEL'S & RESORT



EMION HOTEL



KVL HOTEL



HOTEL'S & RESORT



HYATT HOTEL



SUN & MOON HOTEL



HOTEL'S & RESORT



TREELINE HOTEL



ALLILAH RUSSEY KEO RESORT



OFFICES, APARTMENT'S & CONDO'S



ISI TOWER



KOFI BUILDING



OFFICES, APARTMENT'S & CONDO'S



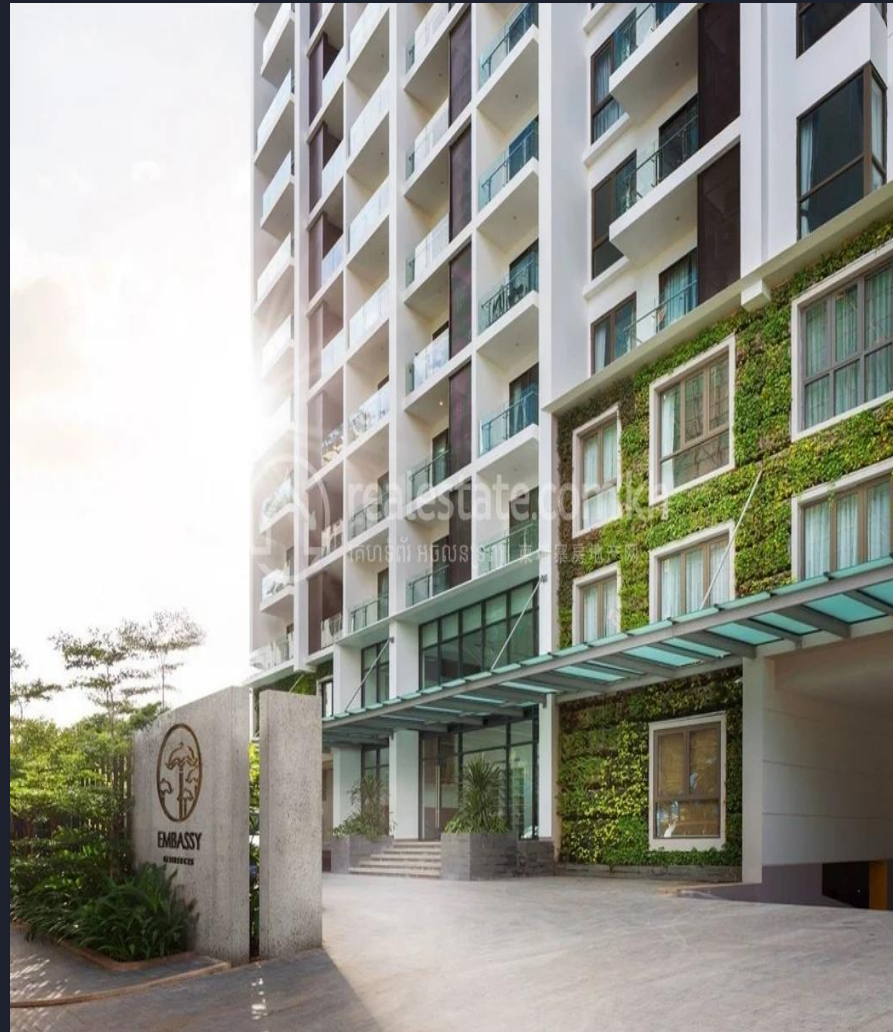
EMBASSY CENTRAL



EXCHANGE SQUARE



OFFICES, APARTMENT'S & CONDO'S



EMBASSY RESIDENCE



COLONIAL MANSION



BANK'S , FACTORIES & WAREHOUSE



HATTHA BANK



VATTANAC BREWERY



BANK'S , FACTORIES & WAREHOUSE



KHMER BREWERY EXTENSION



K- CEMENT FACTORY



BANK'S , FACTORIES & WAREHOUSE



ISI FACTORY



ZUELLIG PHARMA



COMMERCIAL BUILDINGS



K- MALL



CHIPMONG BAKTOUK



COMMERCIAL BUILDINGS



VATTANAC PARKING LIFESTYLE



KMH SHOP HOUSES



COMMERCIAL BUILDINGS



MEGAMALL 271



AEON MALL EXTENSION



LIST OF CE&P MAJOR PROJECTS

| HOTEL'S | AIRPORT'S | FIT-OUT'S | VILLA'S & RESORT |
|--------------------------------|---------------------------------------------|---------------------------|-----------------------------|
| HYATT HOTEL | BRANCH OF VINCI CON.GRANDS PROJECT SAS | NEO GAME | 3 Storeys Villa Sen Sok |
| KOH RUSSEY HOTEL LTD | SOCIETE CONCESSIONNAIRE DE L'AEROPORT | LACOSTE | KOH RUSSEY DEVELOPMENT LTD |
| STARTS CAM (CAMBODIA) | BANK'S | BRP MAZDA SHOWROOM | OFFICE'S |
| URBANLAND RESORT CO., LTD | HATTHA BANK | BAP KIA WAREHOUSE | FUXIN OFFICE |
| VATTANAC HOTEL | HATTHA BANK | SUPERMARKET 271 | KOFI OFFICE |
| SUN & MOON | CAMBODIAN PUBLIC BANK PLC | DOOZII PLAYGROUND | KMH OFFICE |
| CONDO'S | MINISTRY | 3 RESTAURANT VATTANAC | CE&P CORPORATION LTD |
| KHAOU CHULY LAND Co LTD. | MOH BUILDING | LITTLE SHEEP HKL | NATCHANUN PA CO., LTD |
| URBANLAND ASIA CO., LTD | GDT TOWER | LITTLE FUN SHEEP TK | BRANCH OF POSCO ENGINEERING |
| URBANLAND CENTRAL BKK CO., LTD | SCHOOL'S | VERSACE SHOP | IRCO |
| LBL INTERNATIONAL | AII CAMP | ARABICA COFFEE SHOP II | STAR 5 DEVELOPERS PVT LTD |
| COMMERCIAL'S | AISSP | ISI FITOUT OFFICE | |
| CHIPMONG MEGAMALL | COMPU SIEMREAP | FOOD COURT SENSOK MALL | |
| CHIP MONG MALL SEN SOK | INTERNATIONAL SCHOOL OF PHNOM PENH | ARABICA SHOP | |
| AEON 1 EXTENSION | SOUTHBRIDGE INTERNATIONAL SCHOOL (CAMBODIA) | PLAYGROUND SENSOK | |
| AEON WATER SUPPLY | FACTORIE'S | HGB OFFICE | |
| VATTANAC CARPARKING | KHB DRAFT BEER | LOVE MOCHINO SHOP (HKL) | |
| K-MALL KMH | KHB EXTENSION PH 4 | KIDDIES EDGES CO., LTD | |
| ONE KMH TOWER | CROWN KHMER FACTORY | WAREHOUSE'S | |
| SHOPHOUSE KMH | VBL 8 PACKAGES | SIKA WAREHOUSE | |
| CHIP MONG BAK TOUL RETAIL | VATTANAC BREWERY | GEOLINK GROUP CO., LTD | |
| GRAND PP GOLF CO., LIMITED | ISI STEEL FACTORY | ZUELLIG PHARMA | |
| BRANCH OF SHINRYO CORPORATION | KAMPOT CEMENT CO., LTD. | EMBASSY | |
| TIGER BAY CO., LTD. | NAWAPLASTIC (CAMBODIA) | BRITISH EMBASSY-VIENTIANE | |



Thanks for Your Time!